

WHITESIDE FAMILY ASSOCIATION

April 2024

WFA Board & General Meeting

On Saturday morning April 13 the WFA Directors met on Zoom at 10:00 EST. The meeting was led by Barbara Olson, vice-president following the untimely death of the president Nancy Torphy. All meeting participants were welcomed and asked to introduce themselves and share their location. Both Canadian and American directors and meeting participants were included.

Kim Leon agreed to help Barbara rejuvenate the WFA Newsletter. The completed newsletter will be distributed through the website.

Membership stands at 74 life members and 25 active for a total of 99. Total net assets are about \$16,307. The WFA nonprofit status remains unchanged.

The RPL (research project list) serves as an index for past and current projects undertaken by WFA members. The BODS does not do the research but connects interested parties doing family research.

The WFA DNA project has been static for the past 6 months. "Those of Whiteside" who have tested through either Ancestry or My Heritage should share their **autosomal DNA** results with the WFA. Since our project is a function of the male membership only. These additional "finds" may give new and valuable information for families to be shared on the website.

The old WFA website is basically status quo with the new website being a couple of months away from "going live." Members will have to establish a new password. Information will be sent to all members nearer the time.

Facebook is a very successful social media outreach for the WFA with over 600 members in our closed group.

Continued on page 2

April 13 meeting continued

The FCW or Foster Clay Whiteside research material which focuses on the family 1000 has been accepted for safekeeping at Allen County Public Library in Fort Wayne, IN.

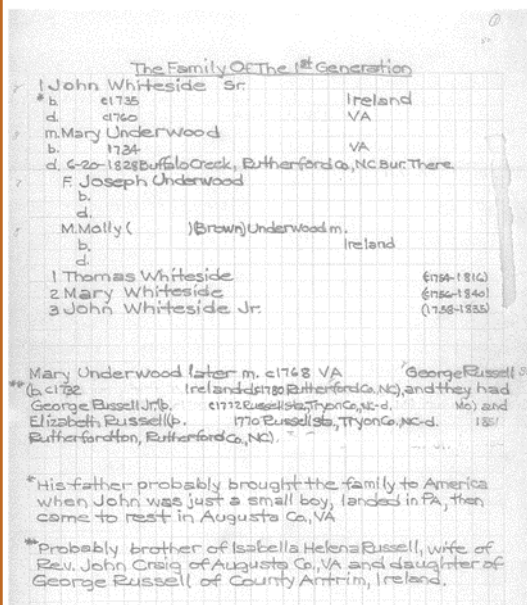
The changes to the Bylaws were accepted by a unanimous vote of members present.

Directors elected for a two-year term were William G. Whiteside, Paul Whiteside, Barbara Olson, and Richard Soard. Tim Whitsitt was elected to fill a vacancy. He, Jim Whiteside and Dan Boucher have one year of their term remaining.

The **next meeting will be on October 10, 2024 at 11:00 EST** on zoom. Chip will provide the link.

Family 1000: significant increase to WFA data base.

The WFA is very fortunate and grateful to receive a very large research archive for family 1000, starting with John Whiteside 1735-1760 = Mary Underwood 1734-1828. There are approximately 20,000 individuals over 10 generations that have been entered in this project. Below is page 1.



This research was done by Foster Clay Whiteside (FCW) between 1967 and 1975. FCW collaborated closely with Don Whiteside, we now have available the results of two giant Whiteside researchers for current and future family historians.

This research was passed on to the WFA by Terry C White side son of FCW to whom we send a big thank you.

The material was acquired last October, since then the paper material was scanned to PDF form and is currently being converted to searchable PDF. We are targeting to have it all on the web site by the end of summer, maybe earlier.

Besides having the Whiteside surname clearly mapped out over the 10 generations, we have almost all the spousal families. This is one aspect of Don's research that was not done. Kelly, Edwards, King, Reavis, Greenstreet, Ledbetter, Hemphill and just a few of the spousal names that appear.



The vitality of the WFA depends upon volunteers to do some important tasks. There are some critical needs listed below. Please study the list and see if you can support the work in some way—they don't require huge amounts of time or attendance at meetings.

1. **DNA Manager**—work with Bill G. Whiteside to oversee the Whiteside DNA project; recruit individuals to participate in the project
2. **Assist leading the Facebook group** Dan Boucher is leading this group alone and could use some help
3. **Data entry** to create a table of contents for the states with research listed. Contact Arliss Whiteside, webmaster, for further info.

These are positions that the board has recognized, but if you have a skill set not mentioned here that you are willing to share with the organization, please contact Chip Whitesides at chip.whitesides@gmail.com

Sandi Trapp, a charter member of the WFA, has provided some interesting links which may help those of you doing research to perhaps find a new/different resource for your work.

The Allen County Public Library provides a newsletter each month that people may find worthwhile looking at: <https://www.genealogy.acpl.lib.in.us/genealogy-gems> This page also provides a way to sign up to receive the newsletter in your mailbox.

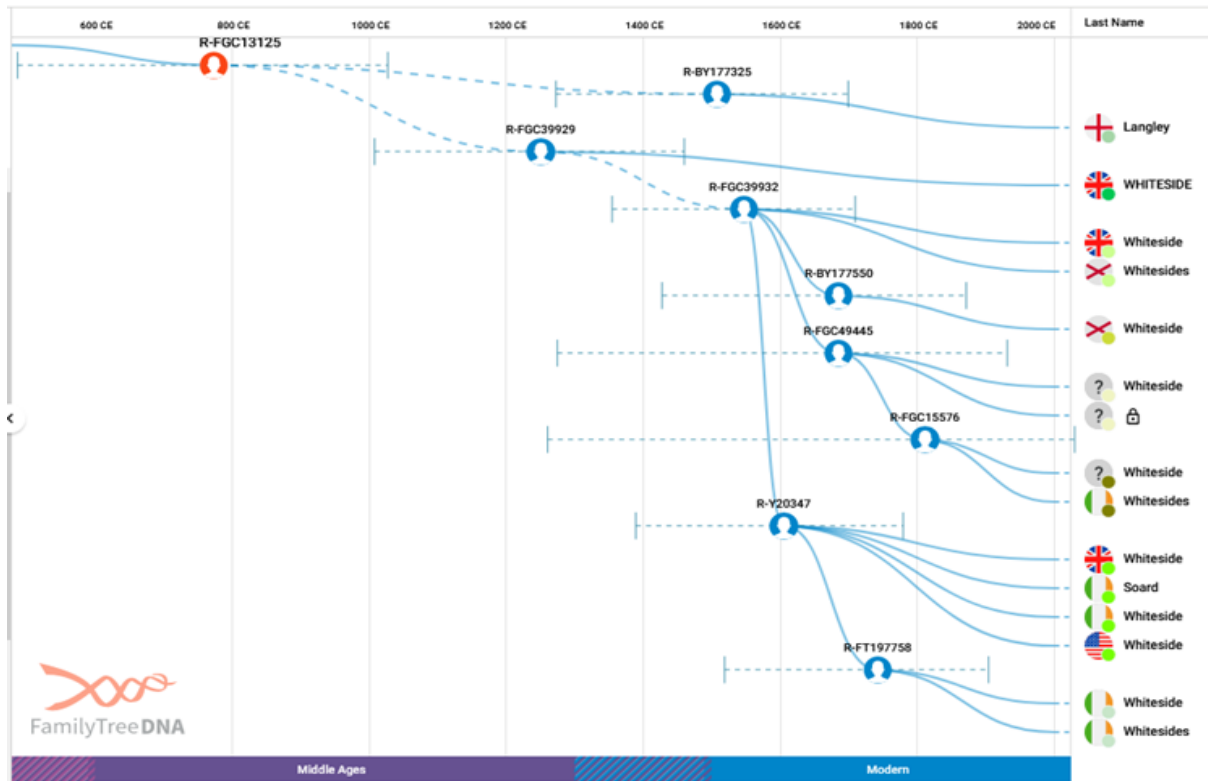
You may want to include some information about webinars that are available, here are a few:

Allen County Public Library has a listing of their webinars at <https://acpl.libnet.info/events?r=days&n=30&t=Family+History+%26+Genealogy>

Legacy Family Tree offers some free webinars: <https://familytreewebinars.com/>

FamilySearch.org also has webinars: https://www.familysearch.org/en/wiki/FamilySearch_Library_Classes_and_Webinars

Whiteside DNA Project on



The above chart represents 15 of the 26 Big Y samples in our project. As reported by FTDNA, R-FGC39932 is a man born about 1543 CE. Dr Don's research shows a Thomas Whiteside born 1545, baptised at St Chads Church in Poulton le Fylde, died in Great Carlton circa 1623. Likely the same person, family 2000. There are 13 Whitesides on this "time tree" that descend from FGC39932. When we trace the descendency of family 2000 from Don's charts, it is possible to get approximately the same results. In fact, we are fortunate to have one member who has proven descendants for 13 generation from 1545 to present in this group. Unfortunately for the rest of us there are gaps, so we do